



BOLA  
OUTDOOR GAS FIRE BOWL



Unit Illustrated: FP2085LPT Outdoor Fire Pit – Propane, FPB305GT Smooth Grey Concrete Fire Bowl.

<b>Model</b>	FP2085NT	FP2085LPT
<b>Fuel</b>	Natural	Propane
<b>Input</b>	57,000 BTUH	64,000 BTUH

**Model Dimensions**

Bola FPB30	30" Diameter x 14" Height
FP2085	20" Diameter x 4 1/2" Height

*The outdoor fire bowls and pits can be installed on top of wood decks or patios, 24" clearance to side walls. Allow 7 feet clearance from top of fire bowl or pit to any ceiling.*

**BOLA STANDARD FEATURES**

- Concrete Fire Bowl available in your choice of Textured Charcoal and Smooth Grey
- Lava Rock included

**FIRE PIT STANDARD FEATURES**

- Choose either Natural Gas or Propane Fire Pit. Propane Fire Pit includes 5 FT Hose and Regulator – Propane Tank not included
- Lava Rock included

**OPTIONAL FEATURES**

**Media:** Decorative Ember Glass (Glacier Ice, Cobalt Blue, Black, Bronze, White), Decorative Stones

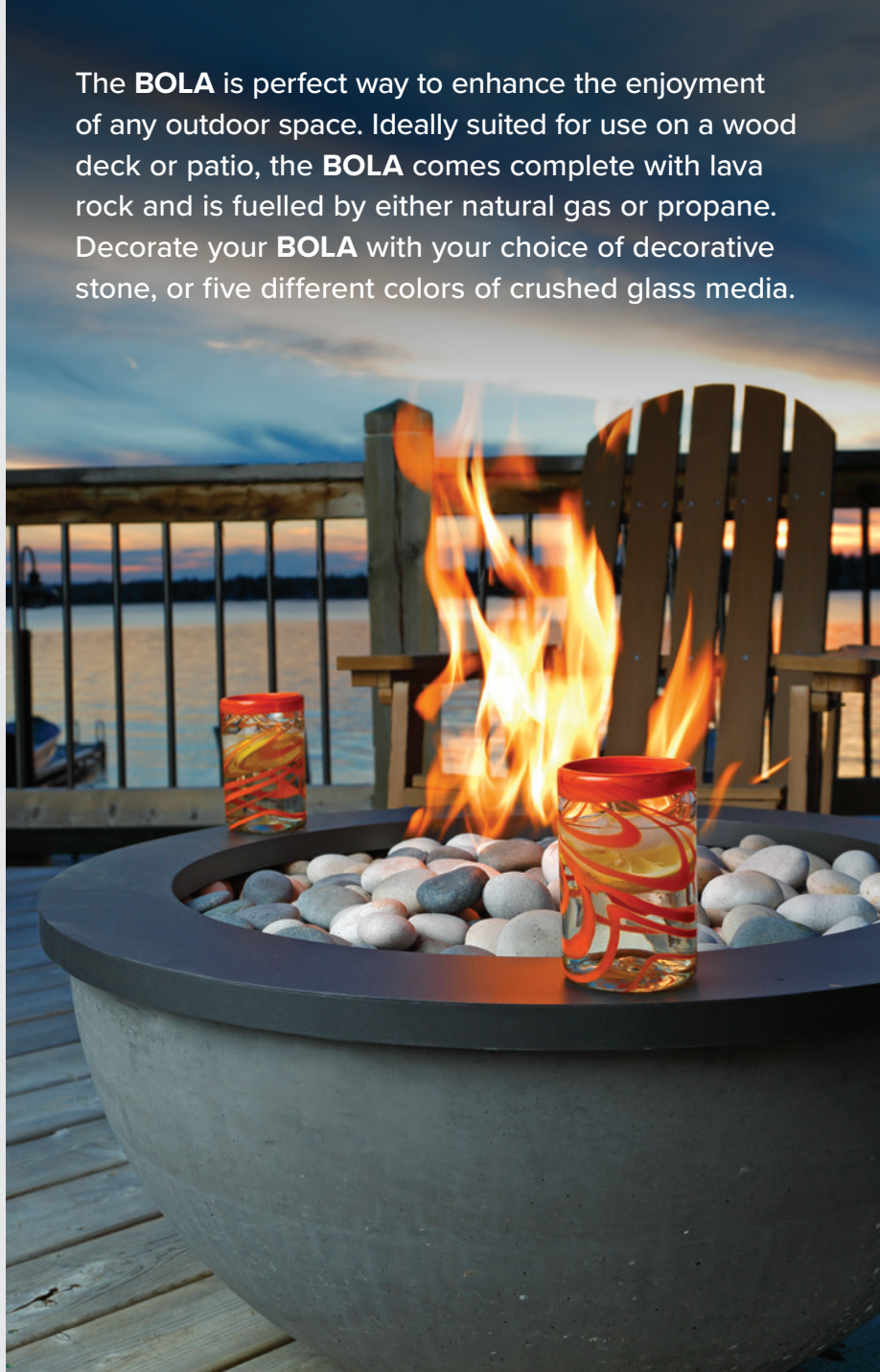
**Log Set:** Oak

**Bola Trim Ring – Charcoal**

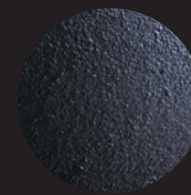
FPB30TRG 31 3/4" diameter x 1 1/6" high

**Bola Cover:** Black – FPB30COVB

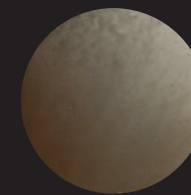
The **BOLA** is perfect way to enhance the enjoyment of any outdoor space. Ideally suited for use on a wood deck or patio, the **BOLA** comes complete with lava rock and is fuelled by either natural gas or propane. Decorate your **BOLA** with your choice of decorative stone, or five different colors of crushed glass media.



**COLOURS**



Textured Charcoal

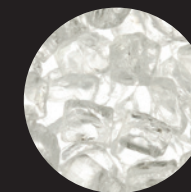


Smooth Grey

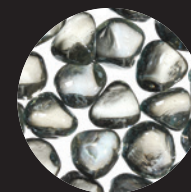
**OPTIONAL ACCESSORIES**



MQG5C Bronze Ember Glass



MQG5W White Ember Glass



MQG5ZG Zircon Glacier Ice Glass



MQG5A Cobalt Ember Glass



MQG5B Black Ember Glass



MLR1410 Lava Rock



LOGC85 4-Piece Oak Log Set



MQSTONE Decorative Stone

**Unit Illustrated:** FP2085LPT Round Outdoor Gas Fire Pit – Propane, FPB30SGT – Smooth Grey Concrete Fire Bowl, MQSTONES Decorative Stones (x2), FPB30TRG Trim Ring – Charcoal.



## FP2085 – ROUND OUTDOOR FIRE PIT

**Unit Illustrated:** FP2085LPT  
 Round Outdoor Gas Fire Pit  
 – Propane, LOGC85 Log Set,  
 FP20SSRT Stainless Steel Ring.



FPB30COVB Optional Bola Cover

**Unit Illustrated:** FP2085LPT Outdoor  
 Fire Pit – Propane, FPB30SGT – Smooth Grey  
 Concrete Fire Bowl, MQSTONES Decorative  
 Stones (x2), FPB30TRG Trim Ring – Charcoal.



FP2085LPT Round Outdoor Gas Fire Pit – Propane,  
 FPB30TBT Textured Charcoal Fire Bowl, MQG10C  
 Bronze Reflective Glass (x4).



FP2085NT Round Outdoor Gas Fire Pit –  
 Natural Gas, MQSTONES Decorative Stones  
 (x2), FPB30TBT Textured Charcoal Fire Bowl.



**OPTIONAL COVER FOR FP2085**  
 FP20COV Table Top Cover (Conveniently Covers  
 Up Propane Tank When Fire Pit Is In Use).



FP2085NT Round Outdoor Gas Fire Pit – Natural  
 Gas, MQSTONES Decorative Stones.



FP2085NT Round Outdoor Gas Fire Pit – Natural Gas,  
 FP20SSRT Stainless Steel Ring.

# FP2785 – OUTDOOR RECTANGULAR FIRE PIT

**Unit Illustrated:** FP2785LPT-FL  
Rectangular Outdoor Gas  
Fire Pit – Propane,  
LOGC85 Log Set.



FP27COV Optional Fire Pit Cover



LOGC85 4-Piece  
Oak Log Set



MLR1410  
Lava Rock

The outdoor fire pit can be installed on top of wood decks or patios, 24" clearance to side walls. Allow 7 feet clearance from top of fire pit to any ceiling.

<b>Model</b>	FP2785NT*	FP2785LPT-FL
<b>Fuel</b>	Natural	Propane
<b>Input</b>	57,000 BTUH	64,000 BTUH

\*NOT STOCKED – order propane model and convert

## Model Dimensions

FP2785 20" Width x 27" Depth x 9" Height

## FIRE PIT STANDARD FEATURES

- Propane Fire Pit includes 5 FT Hose and Regulator – Propane Tank not included
- Lava Rock
- Flat Cover
- Natural Gas Conversion Orifice



FP2785LPT-FL

## FIRE PIT OPTIONAL FEATURES

**Log Set:** Oak

**Fire Pit Cover:** Black (for use with Log Set)  
– FP27COV



Marquis Fireplaces maintains a program of continuous testing, refinement and improvements of all its products. Some aspect of units shown here may be changed at any time without notice or obligation.

Certified for Usa & Canada – ANSI Z21.97-2017 • CSA 2.41-2017  
OUTDOOR DECORATIVE GAS APPLIANCES.

Note: Components may have to be ordered separately to create a complete unit. Discuss with your local Marquis Dealer for clarification.



**FOR CALIFORNIA RESIDENTS ONLY:**  
**WARNING!** This product can expose you to chemicals including Carbon Monoxide, that is an externally vented by-product of fuel consumption, which is [are] known to the State of California to cause birth defects or other reproductive harm. For more information, visit [www.P65Warnings.ca.gov](http://www.P65Warnings.ca.gov).

Crafted entirely in Canada, each Marquis fireplace is built to the highest standards and made to last.



LIMITED LIFETIME WARRANTY

2340 Logan Avenue  
Winnipeg, Manitoba, CAN  
R2R 2V3  
Phone: 204.632.1962  
Fax: 204.632.1960  
[marquisfireplaces.net](http://marquisfireplaces.net)

Printed in Canada  
B074 – 08/2021